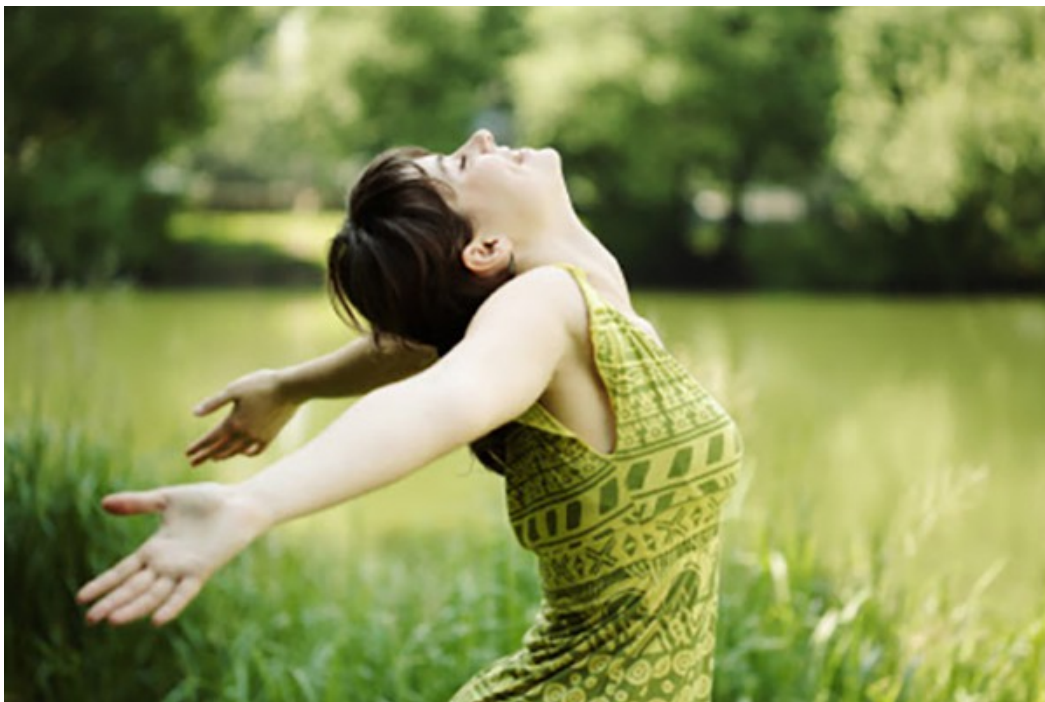




By [iCompareLoan Editorial Team](#)

Back-To-Back Days of Sunshine and Leisure



Lorong Kismis in Bukit Batok New Town, District 12, will be the site of a new, upscale, mid-rise condominium development. Kismis Residences will be a 99-year leasehold with only 50 units plus recreational amenities. Adequately distanced from the metropolis while beautifully nestled by verdant spaces, it's envisioned to promote a contemporary lifestyle with a love for nature.

The site is on lot number 102 of Lorong Kismis, the former site of Kismis Lodge. It's right next to the Eng Kong Garden Playground and near the established residential estate of Toh Tuck. It's close to the Clementi MRT Station (East-West Line), and just a skip away from the upcoming Beauty World MRT Station (Downtown Line). It's also quite accessible via Bukit Timah Road, Bukit

[Join us](#) | [Login for Financial Advisors](#) |

SMS us at +65 – 9782 - 8606

Home Loan | Commercial Loan | Refinance Loan | *Financial Planning | *Insurance



Timah Expressway, or the Pan Island Expressway.

The inspired, contemporary development hopes to encourage an appreciation for the natural surroundings. The five-storey building is to be a highly modern-looking facade, yet it will be cossetted by lush greenery. Each window will open up into a view of a wholesome, family-oriented neighborhood filled with private residences, quaint shop houses, and plots of green. This lush, serene park setting creates a very desirable address, especially for young families.

Furthermore, units at Kismis Residences are designed to be amply spaced and brightly lit. As it offers three-bedroom, four-bedroom and five-bedroom apartments, you can be assured that your next home will allow contentment and creativity for each member of your family.

The development will certainly come with offerings to sweeten your life. You can then have constant access to an assortment of wellness luxuries, including a 50-metre lap pool, a children's wading pool, a steam room, a fitness area, a gym, and a spa tub. There will even be sports amenities like squash courts and tennis courts, plus hangout spots like barbecue areas and landscaped pocket gardens. And for your convenience and peace of mind, the building will also have 24-hour security and a carpark.

Finding the school is a high priority among parents, and as so, you will be glad to live in a neighborhood with many educational institutions here and there. Just across Lorong Kismis, for instance, is Bukit Timah Primary School. Within a few blocks are other primary campuses such as Methodist Girls' School, Pei Hwa Presbyterian Primary School, Bukit View Orimary School and Keming Primary School. The nearby secondary schools, meanwhile, include Yusof Ishak Primary School, Bukit View Secondary School, and Methodist Girls' School. If you would like your children to learn under an international curriculum, you can enrol them at Integrated International School or Dimensions International College.

Your children will also benefit from the safe environment, and they'll enjoy living close to a lot of parks and playgrounds. Just beside Kismis Residences is Eng Kong Garden Playground; in easy walking distance are Cheng Soon Playground, and Toh Yi Garden Playground. Mom and Dad

[Join us](#) | [Login for Financial Advisors](#) |

SMS us at +65 – 9782 - 8606



might even like to stroll to the Eng Kong Place Fitness Corner every now and then for a change of scenery. It will also be a delight for the whole family to live just ten minutes away from places like Bukit Batok Hillside Park, Jurong Lake Park, Central Catchment Nature Reserve, and Bukit Timah Nature Reserve.

There are also a number of malls that are within a short drive. You can go shopping, grab a bite, or find something fun to do at Bukit Timah Plaza, Bukit Timah Shopping Centre, Beauty World Centre, Beauty World Plaza, Clementi Town Centre, or Clementi Mall. Bukit Timah Market and Food Centre is also just close by, for fresh produce and hot meals cooked on the spot.

Choose a lifestyle that allows you to dream, love and breathe, so you won't miss a thing. At Kismis Residences, everything will come together to be agreeable and leisurely, you won't regret it.

And to make home-buying decisions you won't ever regret, compare Singapore home loans with iCompareLoan mortgage broker.

For advice on a new loan, go [here](#).

For refinancing advice, go [here](#).

[Join us](#) | [Login for Financial Advisors](#) |

SMS us at +65 – 9782 - 8606

Home Loan | Commercial Loan | Refinance Loan | *Financial Planning | *Insurance



Home Loan | Commercial Loan | Refinance Loan | *Financial Planning
<http://www.iCompareLoan.com/>
+65 – 9782 – 8606

Read more articles at

PropertyBuyer.com.sg/articles

SingaporeHomeLoan.net/blog/

iCompareLoan.com/resources/category/faq/

[Join us](#) | [Login for Financial Advisors](#) |

SMS us at +65 – 9782 - 8606

Home Loan | Commercial Loan | Refinance Loan | *Financial Planning | *Insurance



Home Loan | Commercial Loan | Refinance Loan | *Financial Planning
<http://www.iCompareLoan.com/>
+65 – 9782 – 8606

About www.iCompareLoan.com Mortgage Consultants

iCompareLoan Mortgage Consultants is a research focused independent mortgage broker. We emphasize a consultative approach where we match our client's financial situation with the best fit mortgage loan, not simply a cheap loan.

Paul Ho is the editor of www.PropertyBuyer.com.sg, www.iCompareloan.com and www.SingaporeHomeLoan.net and he holds a Masters of Business Administration from a reputable university. He is passionate about helping people enhance their wealth through financial literacy and in making money work harder for them.

Email: sales@iCompareLoan.com

Tel: 6100 – 0608

SMS: 9782 – 8606

For agents, mortgage brokers and financial advisors, subscribe to the [Home Loan Report™](#) at iCompareLoan and impress your clients with detailed home loan analyses which facilitate property buying and selling.

Copyright © - All articles are the copyright of www.iCompareLoan.com and CoreConcept Systems Pte Ltd and the company reserves full rights to use, reuse in any form or in any media including rights of attribution and credits of articles.

[Join us](#) | [Login for Financial Advisors](#) |

SMS us at +65 – 9782 - 8606

Home Loan | Commercial Loan | Refinance Loan | *Financial Planning | *Insurance